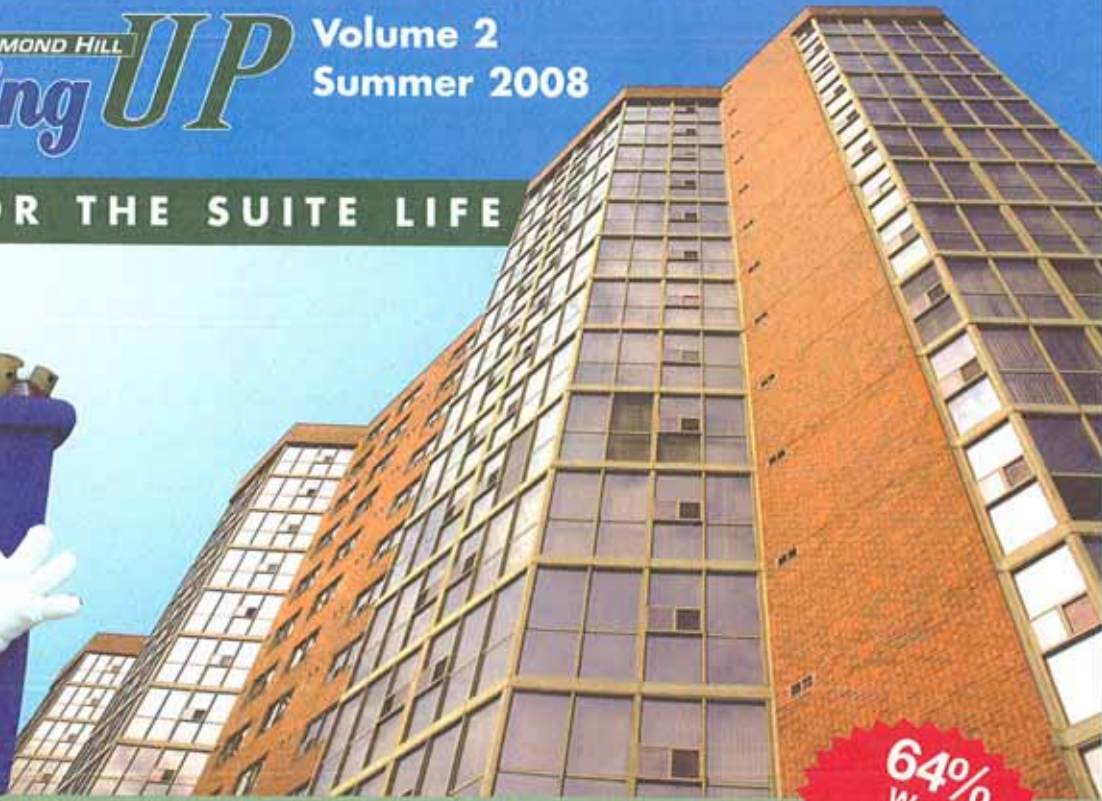




RECYCLING FOR THE SUITE LIFE



64%
Waste
Diversion
from landfill

Richmond Hill has Diverted 64% of Garbage from Landfill

As the population in Richmond Hill continues to rise, development is taking place in the form of new homes, commercial properties and high-rise buildings. High rise buildings are becoming a big part of the landscape that helps define Richmond Hill. With the increase in high rise, multi-family housing, comes the need to help residents manage their waste effectively and offer programs specialized for waste diversion in high rise buildings.

Since the start of the *GoingGREEN* program in single family homes last year, our diversion rate has increased from 30% to 64%. What does this mean? With programs such as yard waste collection, more material accepted in the recycling program, Green Bin, household hazardous waste and electronics depots, we are sending much less waste to landfill, are therefore wasting less and helping our environment.

LOOK INSIDE This Issue:

- 64% of Waste Diverted from Landfill
- **NEW!** Front End Recycling Changes
- What Happens to Blue Box Materials
- How to Dispose of Large Appliances
- Blue Box: What Goes Where Guide
- Disposing of Household Hazardous Waste and Electronics
- How to Donate Furniture

WHAT CAN I DO?

If each of us follows a few simple steps, we can make a big difference. The answer is simple. When you consume a product or replace something in your home, ask yourself if the item can be recycled or reused.

Front End Recycling

Coming this Summer

New!

Over the next little while, recycling totes will be phased out in selected buildings to introduce a new front end recycling container. These containers take up less space while providing more room to recycle. The benefits to your building will be less clutter of totes which should give a more visible appeal to your building. It will also be easier for your property manager to maintain and operate. Please use a re-usable bag to carry your recyclable materials to the bin. Plastic bags cannot be recycled at this time and are not allowed. Remember that Styrofoam and plastic bags are not part of our recycling program.



What Happens to Recyclable Materials

Recyclable materials are collected and "commingled", which means that all of the materials are mixed together in the recycling truck compartment. This makes for more efficient collection and the sorting facility can easily separate them afterwards.

Most of the recyclable material is sorted mechanically using specialized equipment that separates the materials



by size, shape and weight. Sorting stations remove cardboard, paper, steel, aluminum, plastics and glass. The majority of separated materials are then baled for transport except certain materials like newspaper and glass, which are shipped loose.

Please do not put your recyclables in bags. Bagged materials and shredded paper are physically different in size to other recyclable materials and the processing system is not designed to handle this material.

Recyclable materials are sold to markets to be made into a variety of new products. Old paper becomes new newsprint, plastic bottles become fleece sweaters or insulation for jackets and sleeping bags, aluminum and steel cans are made into new cans and other metal products.

How to Dispose of Large Appliances

Appliances are collected for FREE once per month by appointment only. Contact your superintendent or property manager and tell them that you are disposing of an appliance. Your property management team will notify the Town of Richmond Hill and set up an appointment.

APPLIANCES CONSIST OF

- Refrigerators
- Stoves
- Washer/Dryers
- Air conditioners
- Microwave ovens
- Metal bedframes
- Dishwashers
- Water coolers
- Metal bathtubs
- Metal shelving
- Barbeques



For more information contact the OPERATIONS CENTRE

Blue Box Talk

What Goes In and What Stays Out

RICHMOND HILL
Going UP

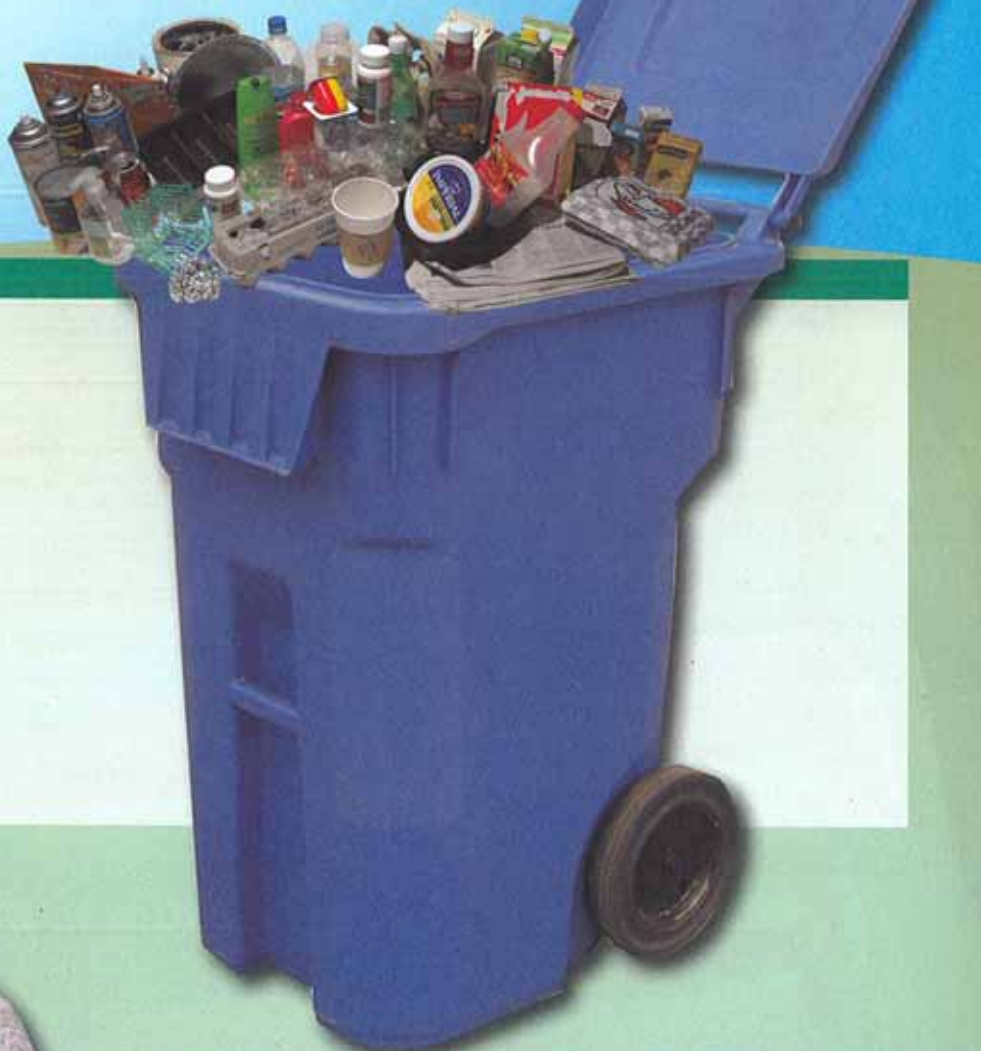


Remember to rinse and recycle

No more sorting!

Flatten cardboard & place it your building's cardboard bin

Large blue recycling totes are located at most buildings to accept your recyclable materials. Check the handy list below. There is no need to sort anymore as the material is sorted at the recycling facility. Cardboard must be flattened and in most cases, will go in a separate bin.



WHAT GOES IN

- Rigid plastic bottles, jugs, trays & tubs
- Aluminum food trays/wrap
- Soft drink, food & empty paint cans
- Empty aerosol cans
- Glass bottles & jars
- Milk & juice containers, drinking boxes
- Newspapers & magazines
- Writing paper, envelopes & cards
- Phone books & paper back books
- Paper & plastic egg cartons
- Kraft paper, paper bags, boxboard



WHAT STAYS OUT

Shredded paper is not accepted in the recycling totes because the recycling facility is not equipped to handle shredded paper or plastic bags. Styrofoam, plastic bags, plastic wrap, plastic packaging and toys are also not accepted in the recycling stream. These items must be disposed in the normal garbage containers.

Plastic shopping bags can be returned to most grocery stores for recycling.



1200 Elgin Mills Road East, 905-884-8013

www.richmondhill.ca

Other News & Notes

Is your Household Hazardous Waste going to the right place?

Throwing Household Hazardous Waste (HHW) in the garbage or putting it down the drain can be dangerous to your family and our environment. Household Hazardous Waste can be disposed of at one of the Region's four HHW Depots for FREE.

Materials accepted include:

- Paints, solvents
- Batteries (wet & dry cell)
- Household cleaners, detergents
- Motor oil, windshield washer fluid
- Prescription medicine, syringes
- **New!** Fluorescent tubes, energy efficient bulbs

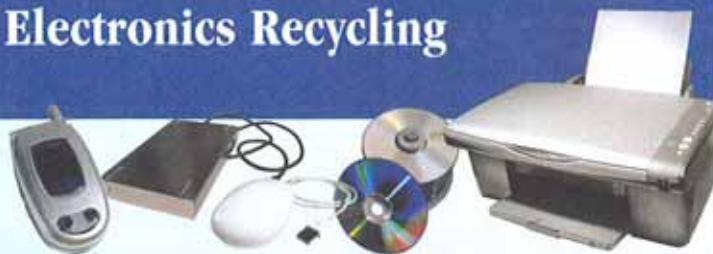


How do I dispose of my HHW?

Keep materials in their original containers, or ensure that the containers are clearly labeled. Do not mix different products together. Tightly cap all containers.

Bring them to your local Public Drop-off Depots at no charge. Most of the waste will be recycled into new products. The rest will be forwarded for safe disposal in a specially designed chemical landfill.

Electronics Recycling



Rodick Road facility:
Wednesday 10:00 a.m. to 6:00 p.m.
& Saturday 8:30 a.m. to 4:30 p.m.

Rutherford Road facility:
Thursday 10:00 a.m. to 6:00 p.m.
& Saturday 8:30 a.m. to 4:30 p.m.

For more information on Household Hazardous Waste and electronics recycling, please visit York Region's website at www.york.ca.

Recycle your old computer, monitors (no televisions), printer, scanner, fax machine, telephones, pagers, CD's and DVD's, stereos (no speakers), at the Household Hazardous Waste Facility near you where they also accept old electronics for recycling at no cost. Please remove all packaging before delivering items to the depot.

How to Donate Furniture

Too many times, furniture that is reusable ends up at landfills when they could be donated to charities and help provide a necessity for less fortunate citizens.

Sofas, chairs, desks and dressers (even clothing) can all be donated. It's very easy and pickups can often be arranged.

Steps for Recovery Richmond Hill	(905) 762-1551
Salvation Army Richmond Hill	(905) 737-7164
Goodwill Thornhill Location	(416) 362-4711



The disposal of broken furniture should be coordinated through your property manager. Typically this material is placed into the large garbage bins for collection.

For more information on waste reduction initiatives, please visit our website at www.richmondhill.ca

