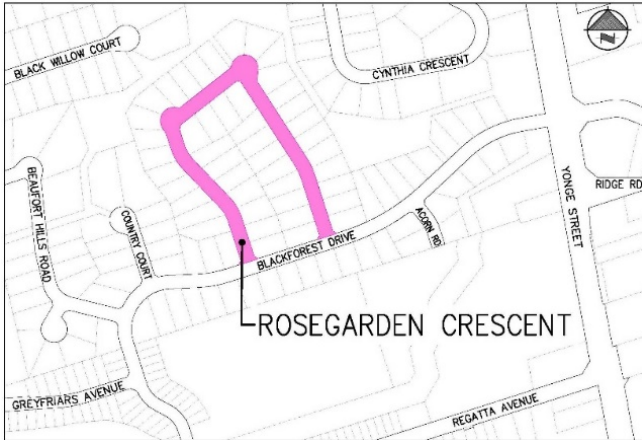


Rosegarden Crescent Reconstruction



Status Update

The purpose of this notice is to advise on the deferred construction timing and to clarify the key issues discussed during the Public Information Centre (PIC) in January 2023 and subsequent discussions with homeowners. It also provides an update on the proposed works on Rosegarden Crescent.

Construction Schedule Update

Please be advised that the proposed road reconstruction on Rosegarden Crescent has been deferred to Spring 2024. A new City-Wide Wastewater Sewer Model has recently been completed and identified the need to upsize the trunk sanitary sewer on Rosegarden Crescent and Blackforest Drive. This deferral will allow the City to complete the sanitary sewer design and give homeowners ample time to arrange for the sump pump drain disconnection in 2023. The City will provide further update on the construction start date in early 2024.

Sanitary Sewer Upsizing

As noted above, according to the recent City-Wide wastewater modeling study, it has been identified that the western section of the sanitary sewer on Rosegarden Crescent requires upsizing to enhance the capacity of the overall sewer system network. The proposed sanitary sewer upsizing will be included as part of the Rosegarden Crescent Reconstruction project.

Sump Pump Drain Disconnection *****IMPORTANT – Action Required*****

As per previous communications and the Public Information Centre held on January 26, 2023, private sump pump outlets discharging to the ditches within the City's right of way do not meet the City's By-law (Municipal Code Section 801) and Ontario Building Code. As part of the road reconstruction, the existing roadside ditch will be filled and a new storm sewer system will be installed on Rosegarden Crescent. It is important that all existing private buried drain pipes discharging to the ditch are disconnected and modified to drain overland within private property by the homeowner before the road reconstruction to prevent any sump pump outlet blockage.

Please refer to Option 1 in Appendix 1 for a visual representation illustrating the proper method of discharging the sump pump water to the ground surface through a direct outlet. No Permit is required for Option 1. Some homeowners inquired if the sump pump outlet can be connected to the new storm sewer. A storm service connection for the sump pump outlet is possible but not recommended. For additional information, please refer to Option 2 in Appendix 1. A permit will be required for option 2.

Sidewalk Design

The current road design incorporates a new sidewalk on the inner side of Rosegarden Crescent, connecting the east and west intersections at Blackforest Drive to the existing trail entrance of Willow Hollow Park. Original plans were to have sidewalks on both sides of the street however due to utility conflicts, site topography, and constructability challenges on the outer side, a sidewalk will only be provided on the inner side. Requests have been received to eliminate the sidewalks. Based on the community needs from an active transportation requirement, providing linkages to public spaces and public safety needs, the sidewalk will be retained on the inner side.

Driveway Access Impact

During construction activities such as curb installation, sidewalk construction, watermain/sewer trenches, and paving, there will be short periods when driveway access may be impacted during the day. The construction works will be phased to minimize the number of driveways being impacted simultaneously. Construction notices will be issued in advance to provide temporary on-street parking instructions to the impacted residents. If the driveway access is unavailable overnight due to concrete and asphalt works at the driveway, residents can park their vehicles on the street next to their driveways overnight. If you have specific accessibility needs for driveway access, please contact the City's Project Lead.

For additional project information, please visit RichmondHill.ca/CapitalProjects or scan this QR code. If you are unable to access the website, please contact the project lead.



Contact/Project Lead:

Anita Wong, Project Manager
T: 905-771-5461
E: anita.wong@richmondhill.ca

Planning and Infrastructure Department
Infrastructure Delivery Division

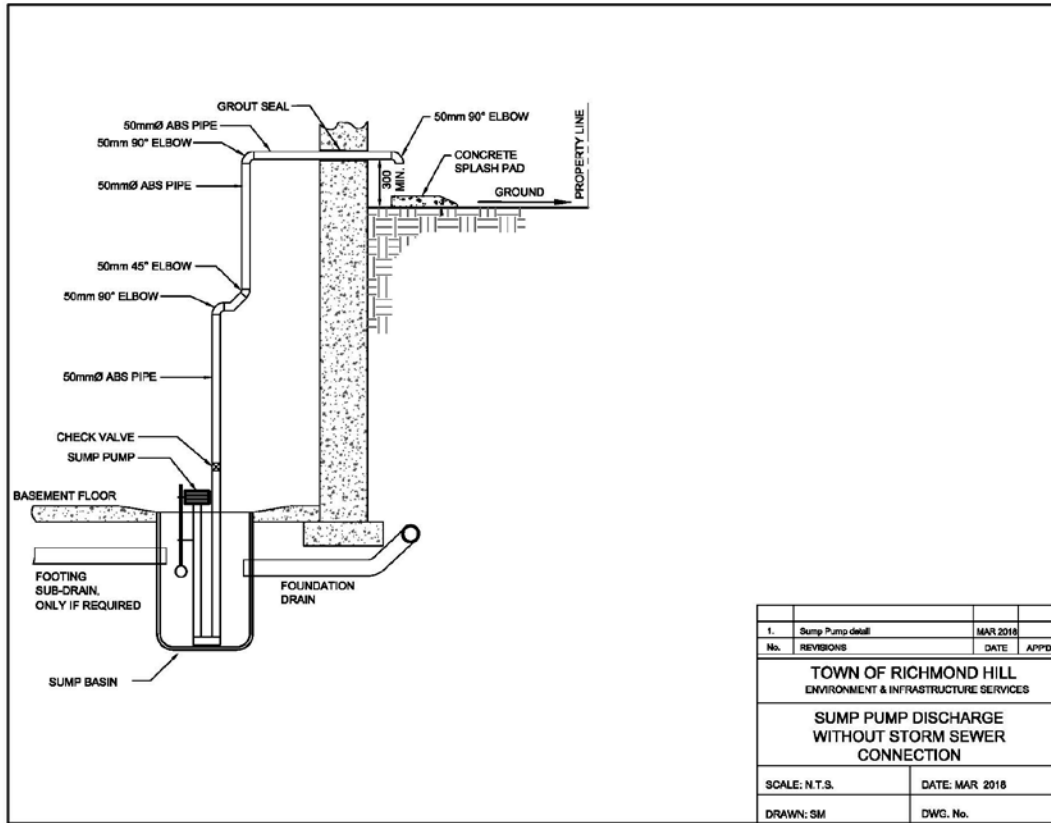
Dated June 1, 2023

Project Location:

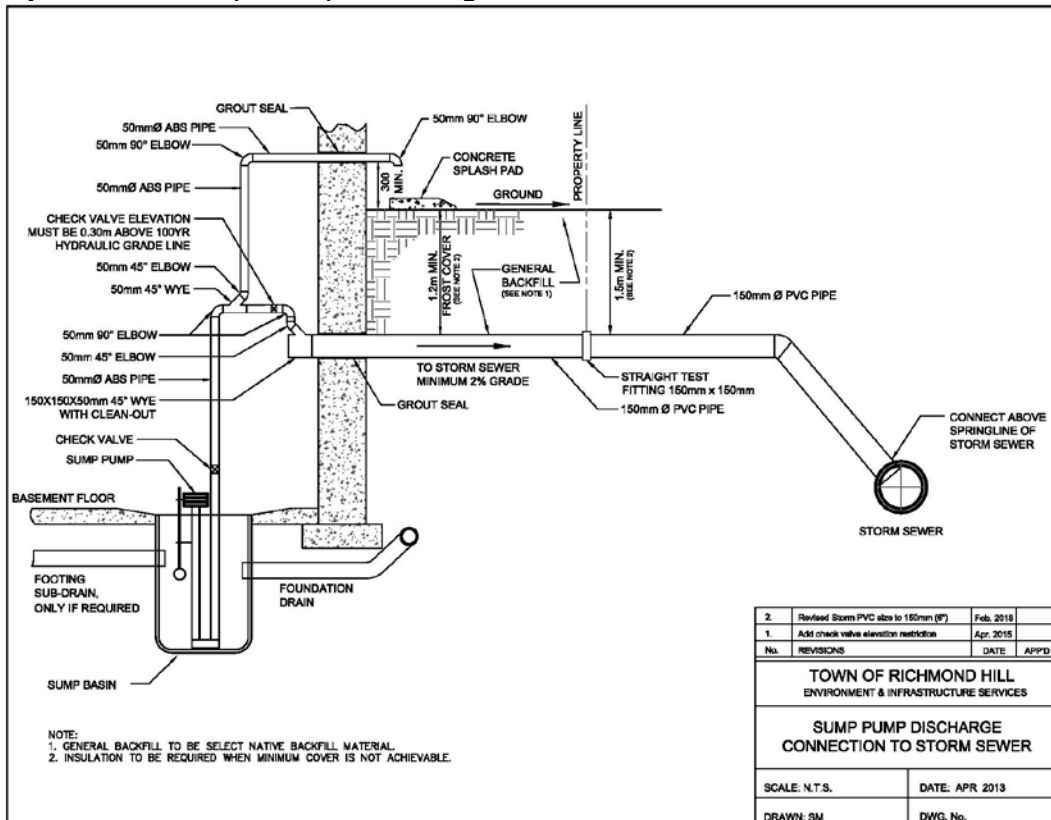
Rosegarden Crescent from Blackforest Drive to
Blackforest Drive

Website: RichmondHill.ca/CapitalProjects

Option 1 – Sump Pump Discharge to the Ground Surface (Recommended)



Option 2 – Sump Pump Discharge Connection to Storm Sewer*



***Additional information for Option 2 (Sump Pump Discharge Connection to Storm Sewer)**

Conditions

- The proposed storm sewer has enough capacity.
- The elevation of the sump pump outlet should not be lower than the proposed storm sewer.
- The sump pump outlet needs to be modified as shown in the standard detail and in accordance with the City permit requirements.
- All modifications within the private property, including the connection to the storm service pipe at the property line, are the responsibility of the homeowner.
- The connection to the storm service pipe at the property line can only be made once the City's road reconstruction is complete.

Homeowner Responsibilities

- Obtain a permit from the City's Building Division for the proposed storm service connection before the road reconstruction.
- Pay the required fee for the City to install the proposed storm service pipe within the City's right of way, extending from the storm sewer up to the property line.
- Find a temporary solution to handle the sump pump drainage after disconnecting the buried drain pipe, until the sump pump outlet can be connected to the new storm service pipe at the property line.
- Arrange for the sump pump outlet modifications, including the storm service pipe installation from the building to the property line within the private property, after the City's road reconstruction is complete.