

2018

EMPLOYMENT SURVEY RESULTS

RICHMOND HILL

72,020
J O B S
 2018 Surveyed Employment

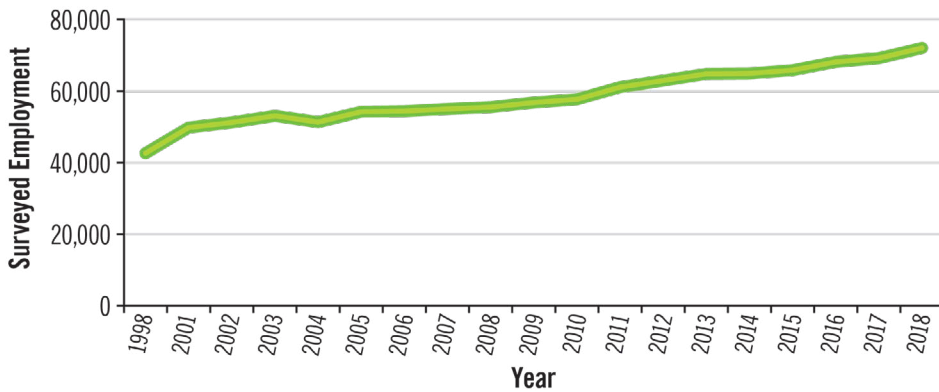
4,840
BUSINESSES
 SURVEYED
 in 2018

3.5%
EMPLOYMENT
GROWTH
2,830 JOBS
 2017 to 2018

3.9%
Average Annual
EMPLOYMENT
GROWTH
 2008 to 2018

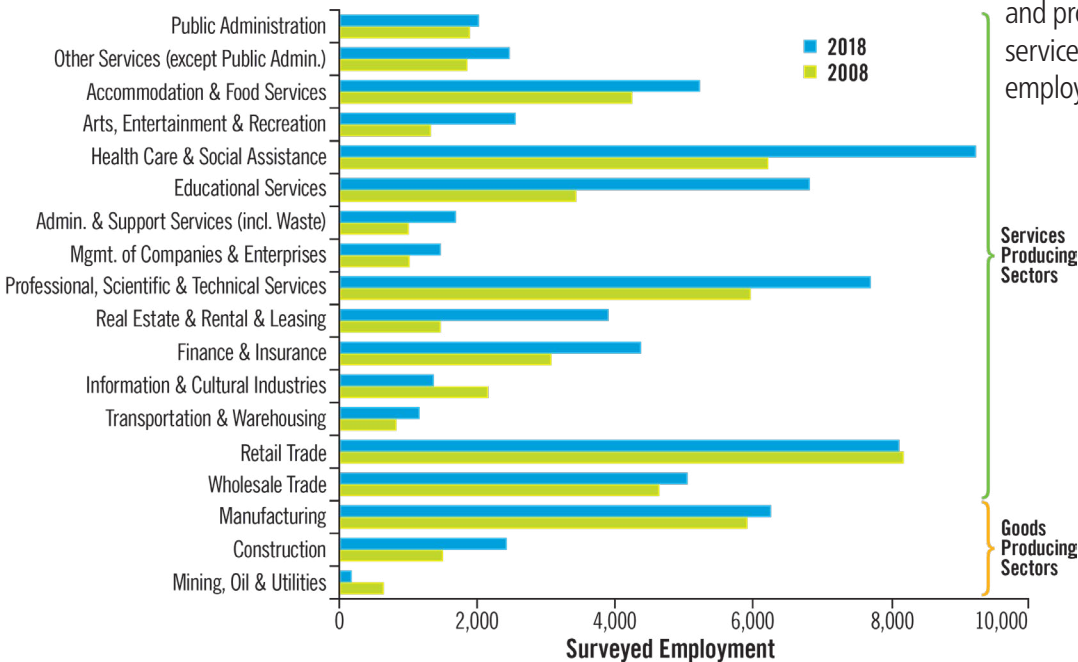
3.6%
Average Annual
BUSINESS
GROWTH
 2008 to 2018

Historical Surveyed Employment, 1998-2018

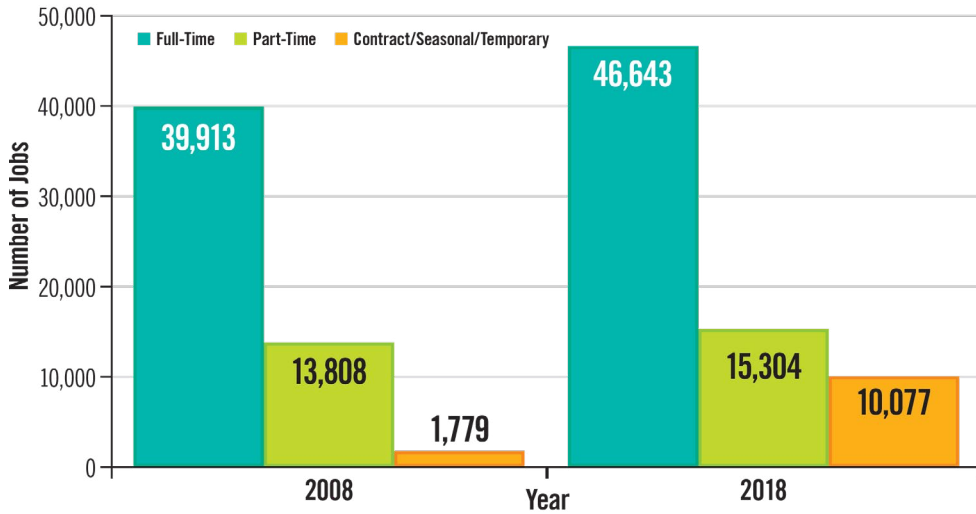


- ▶ The Town of Richmond Hill has added over 29,400 jobs to its employment base since 1998
- ▶ Over the past ten years, the educational services sector was the primary driver of growth increasing by 3,390 jobs, followed by the health care and social assistance sector which grew by 3,000 jobs
- ▶ Between 2017 and 2018, the educational services sector experienced the most growth, increasing by over 1,300 jobs
- ▶ Service oriented jobs accounted for 88 per cent of all employment in 2018
- ▶ Health care & social assistance, retail trade and professional, scientific & technical services held the largest shares of employment in 2018

Distribution of Employment by Sector, 2008 and 2018

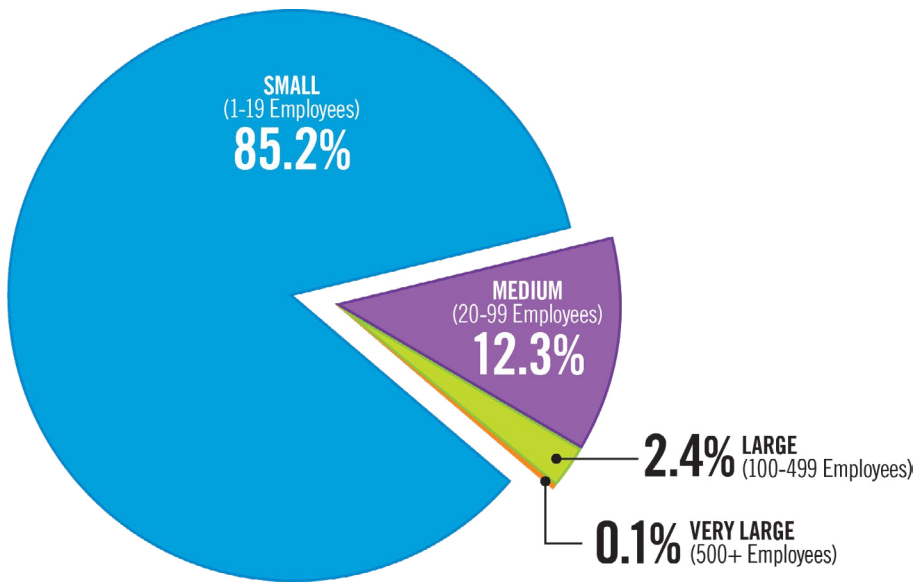


Employment by Type of Worker, 2008 and 2018



- ▶ Since 2008, full-time employment in Richmond Hill has grown by approximately 6,700 jobs and accounted for 65 per cent of the Town's employment in 2018
- ▶ The share of part-time employment decreased from 25 per cent in 2008 to 21 per cent in 2018 while the share of contract/seasonal/temporary workers grew from 3 per cent to 14 per cent
- ▶ The number of surveyed businesses has grown by 23 per cent or approximately 900 businesses since 2008
- ▶ In 2018, businesses employing less than 20 employees accounted for 85 per cent of total businesses
- ▶ Since 2008, the shares of medium sized firms has remained stable at 12 per cent
- ▶ Large and very large sized businesses accounted for a combined 3 per cent share of surveyed businesses in 2018

Surveyed Businesses by Size, 2018



Numbers contained within this profile include surveyed data collected from the 2018 Employment Survey. The 2018 survey was a comprehensive Region-wide survey of all businesses with a physical location across York Region and excludes farm and home-based businesses. Farm and home-based employment data is reported in the 2018 Employment and Industry Report.

Share of employment by Services-Producing and Goods-Producing Sectors, 2008 and 2018

