



YOU'RE INVITED TO A PUBLIC OPEN HOUSE

for:

SNIVELY WETLAND OUTLET, SWMF 2-14 (PARADELLE) AND SWMF 2-15 (WORTHINGTON) SCHEDULE B ENVIRONMENTAL ASSESSMENT

Please join us to review proposed solutions for the stormwater rehabilitation of Snively Wetland, Stormwater Management Facility 2-14 (Paradelle Drive) and Stormwater Management Facility 2-15 (Worthington Avenue), with a focus on potential alternatives for improvement of the wetland's water level conditions through an evaluation of alternative outlet structure scenarios.

The study area is shown on the reverse of this page, and it is bound by Bayview Avenue to the east, Worthington Avenue to the west, Snively Street to the south and Paradelle Drive to the north.

City staff will be on-hand to hear your input and answer your questions. If you are unable to attend the in-person event, you will have a chance to view the proposed solutions and provide feedback between June 11 and July 2, 2024, by visiting the project webpage.

Tuesday, June 11, 2024, 6 – 8 p.m.
Oak Ridges Community Centre
12895 Bayview Avenue Richmond Hill, ON L4E 3G2, Program Room 1

For more information on this project, please visit the City's website:

RichmondHill.ca/SnivelyEA

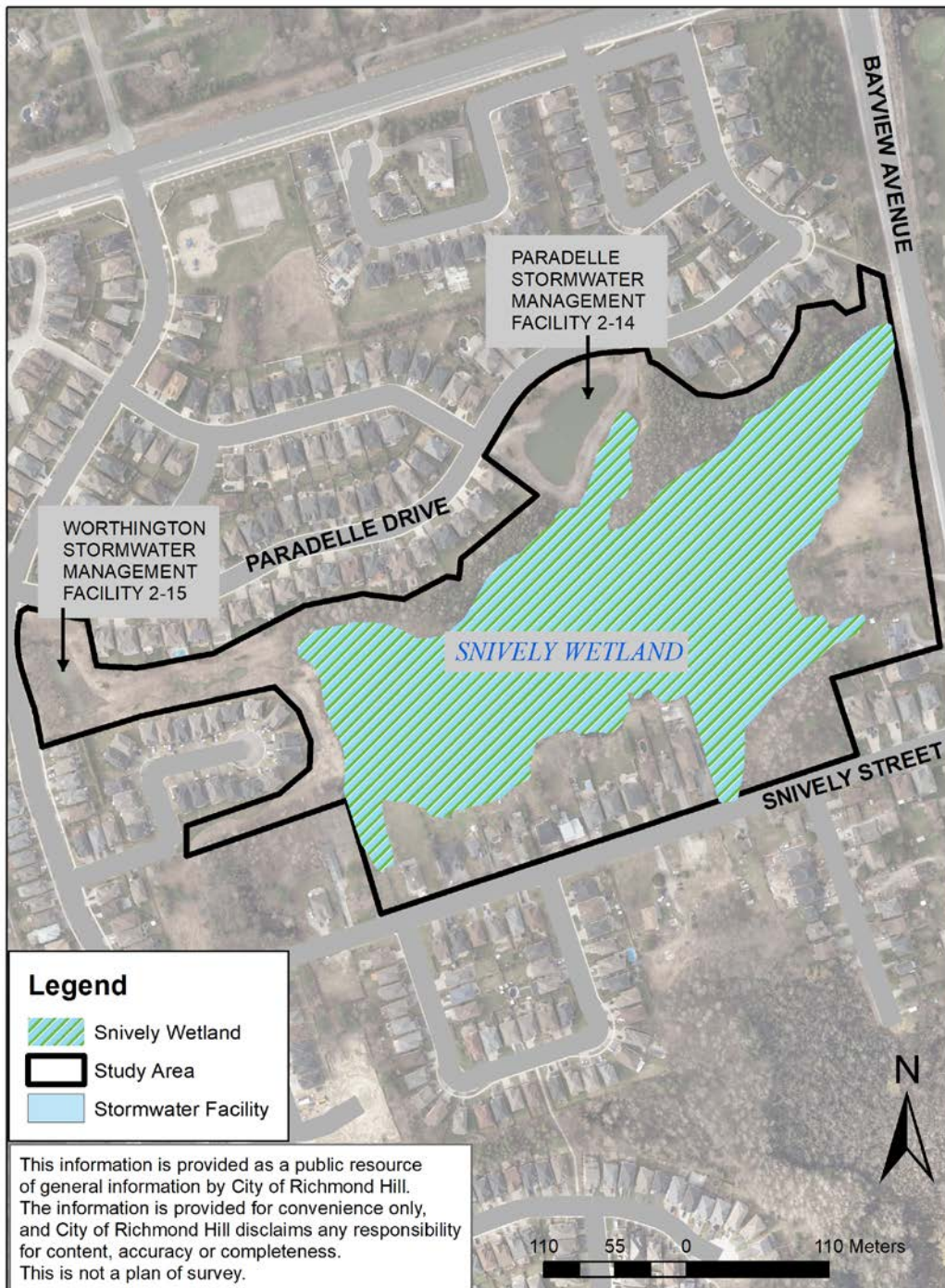
Should you have any questions or comments, require further information, or wish to be added to the study mailing list for future updates, please contact one of the Study Team members:

Kristina Delidjakova, M.Sc.
Coordinator, Water Resources
City of Richmond Hill
225 East Beaver Creek
Richmond Hill, ON L4B 3P4
905 771 5539
kristina.delidjakova@richmondhill.ca

Alison Gingrich Regehr, M.A.Sc., P.Eng., CAN-CISEC
Consultant Project Manager
Aquafor Beech Ltd.
55 Regal Rd, Unit 3
Guelph ON, N1K 1B6
519 778 0257
gingrichregehr.a@aquaforbееch.com

For all other stormwater management inquiries in the City,
please email us at stormwater@richmondhill.ca

This notice was issued May 27, 2024.



Any personal information is collected under the authority of the Municipal Act 2001, S.O. 2001, c.25, and the Environmental Assessment Act, R.S.O 1990, c. E.18. This information will be used and/or disclosed for the purposes of compiling comments, responses and related activities for the assessment process. Individuals who submit correspondence should be aware that any personal information in their communication will become part of the public record. The City will make it available to the public, unless the individual expressly requests the City to remove the personal information from the public record. Questions about the collection of this information may be directed to Kristina Delidjakova, at 905-771-5539, 225 East Beaver Creek Rd, Richmond Hill, Ontario L4B 3P4.