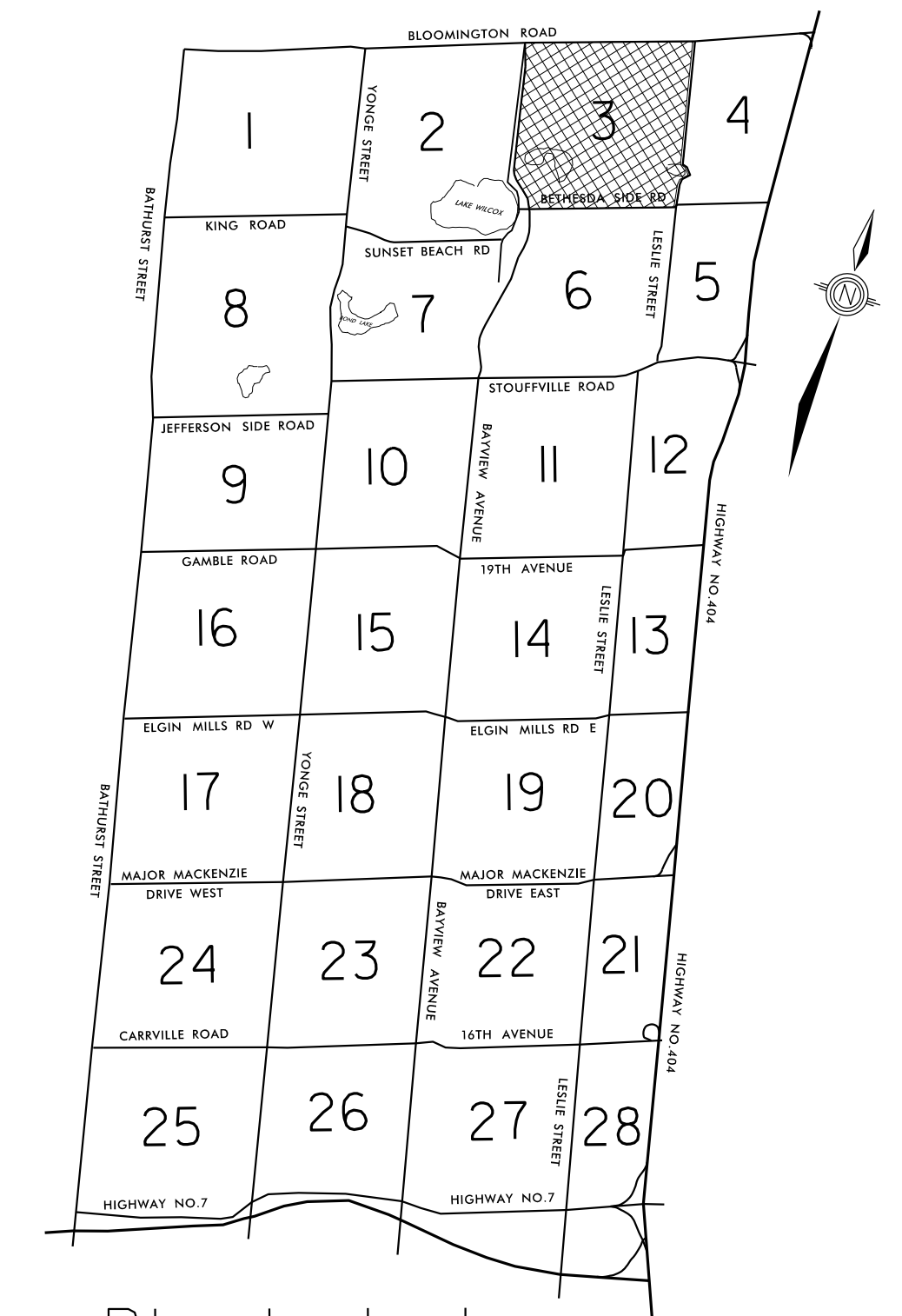


# BLOCK 3 ZONING MAP

THIS MAP IS PREPARED FOR INFORMATION ONLY. FOR ACCURATE REFERENCE, PLEASE REFER TO ORIGINAL BY-LAW AND AMENDMENTS.



Block Index

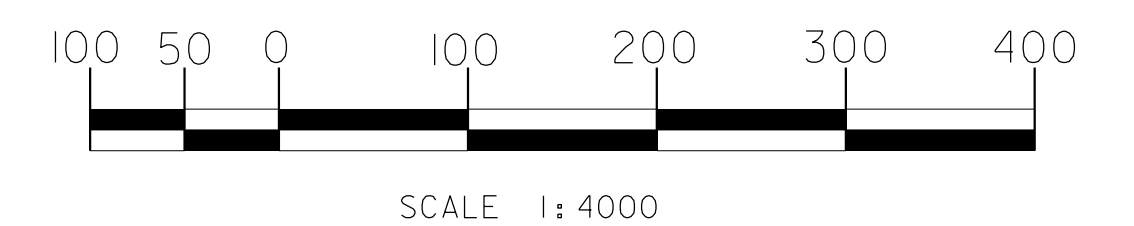
### LEGEND:

- PARENT BY-LAW BOUNDARY
- AMENDING BY-LAW BOUNDARY
- ZONING BOUNDARY
- R2** ZONING SYMBOL
- 203-96** BY-LAW NUMBER
- 7.10** BY-LAW EXCEPTION NUMBER
- 128-04** PARENT BY-LAW NUMBER
- SITE PLAN CONTROL AREA

This map is consolidated to March 21, 2013.

Map produced by Planning & Regulatory Services Department, Feb 2017

Data source:  
Property data provided by Environment & Infrastructure Services Department



PLANNING & REGULATORY SERVICES  
DEPARTMENT

**Richmond Hill**  
Town of Richmond Hill  
225 East Beaver Creek Road  
Richmond Hill, Ontario  
Canada, L4B 3P4  
Telephone: 905 771 8910  
Fax: 905 771 2404  
E-mail: [planning@richmondhill.ca](mailto:planning@richmondhill.ca)

**Disclaimer:** This information is provided as a public resource of general information by the Town of Richmond Hill. The information is provided for convenience only, and the Town of Richmond Hill disclaims any responsibility for content, accuracy, currency or completeness. This is not a plan of survey.

