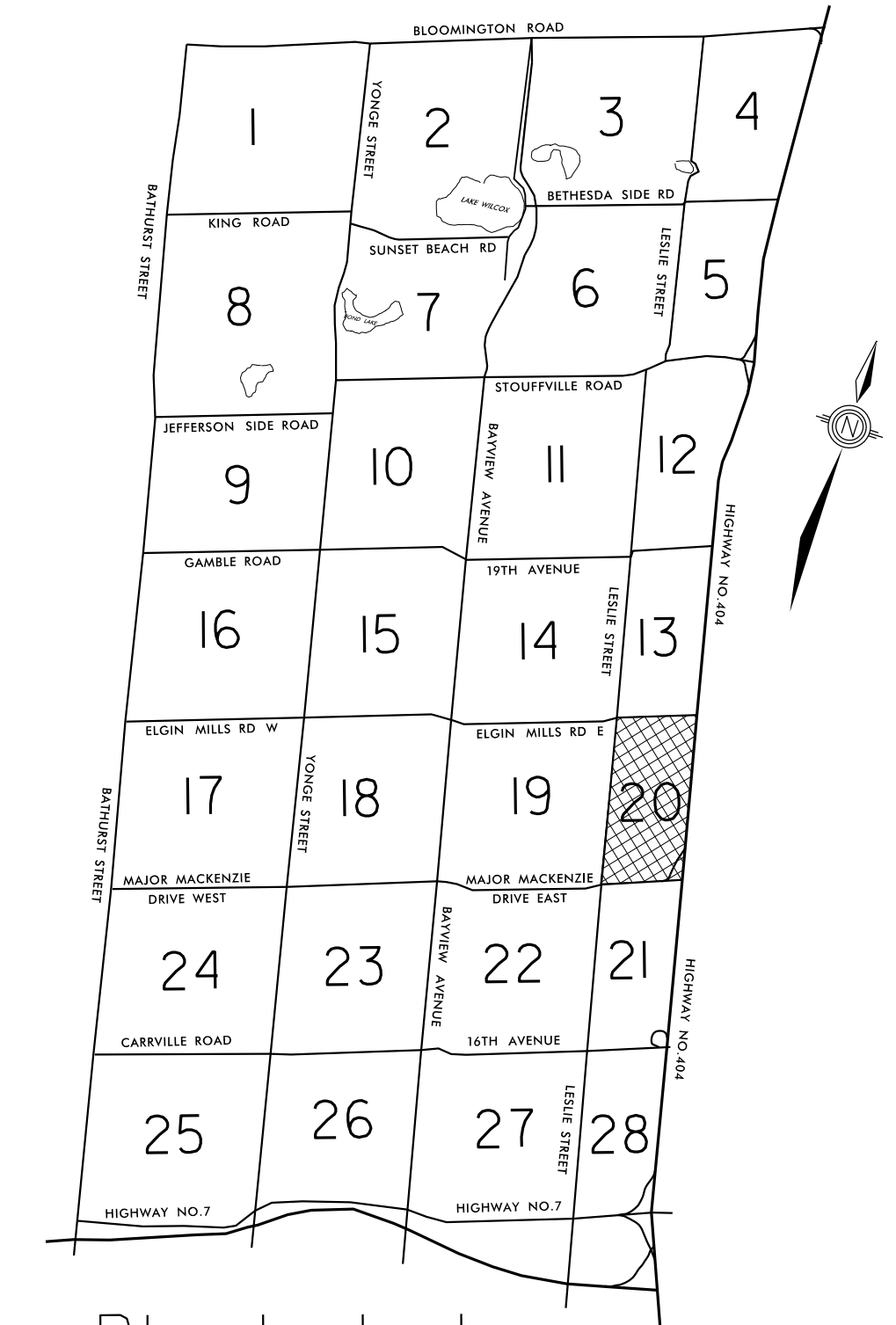


# BLOCK 20 ZONING MAP

THIS MAP IS PREPARED FOR INFORMATION ONLY.  
FOR ACCURATE REFERENCE, PLEASE REFER TO  
ORIGINAL BY-LAW AND AMENDMENTS.



Block Index

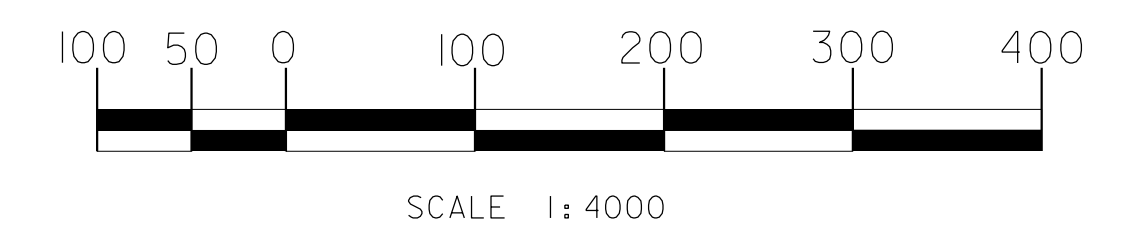
### LEGEND:

- PARENT BY-LAW BOUNDARY
- - - - - AMENDING BY-LAW BOUNDARY
- ZONING BOUNDARY
- R2 ZONING SYMBOL
- 203-96 BY-LAW NUMBER
- 7.10 BY-LAW EXCEPTION NUMBER
- 2325-68 PARENT BY-LAW NUMBER

This map is consolidated to May 14th, 2018.

Map produced by Planning & Regulatory Services Department, May 2018

Data source:  
Property data provided by Environment & Infrastructure Services Department



PLANNING & REGULATORY SERVICES  
DEPARTMENT



Town of Richmond Hill  
225 East Beaver Creek Road  
Richmond Hill, Ontario  
Canada, L4B 3P4  
Telephone: 905.771.8910  
Fax: 905.771.2404  
E-mail: [planning@richmondhill.ca](mailto:planning@richmondhill.ca)

Disclaimer: This information is provided as a public resource of general information by the Town of Richmond Hill. The information is provided for convenience only, and the Town of Richmond Hill disclaims any responsibility for content, accuracy, currency or completeness. This is not a plan of survey.

